

Arthur Belanger, MHS,
PA(ASCP)

Pathology Department
Yale University

Autopsy Safety

The Procedure

The Autopsy or Post Mortem examination is considered to be a Surgical like procedure that has a high chance of exposure to pathogens. Especially, Bloodborne.

Let's look at the tools used!



The facility



The tools



My favorite tool

A white rectangular tray sits on a stainless steel surface with circular perforations. Inside the tray, a scalpel with a light-colored wooden handle and a long, thin metal blade is positioned horizontally. Below it, a separate, shorter black blade with a small hole at one end lies horizontally. To the right, another white tray is partially visible, containing various surgical instruments including a hammer and several forceps. In the top left corner, a pair of surgical scissors is also partially visible.

Very sharp

Sharp





Disposal



The device

Septum
Circus of
coronary sinus
Inf
vena cava

S-A
node

Sinus node

Ant. cardiac

R. margi

R. v

na Biolog



The Bladeflask



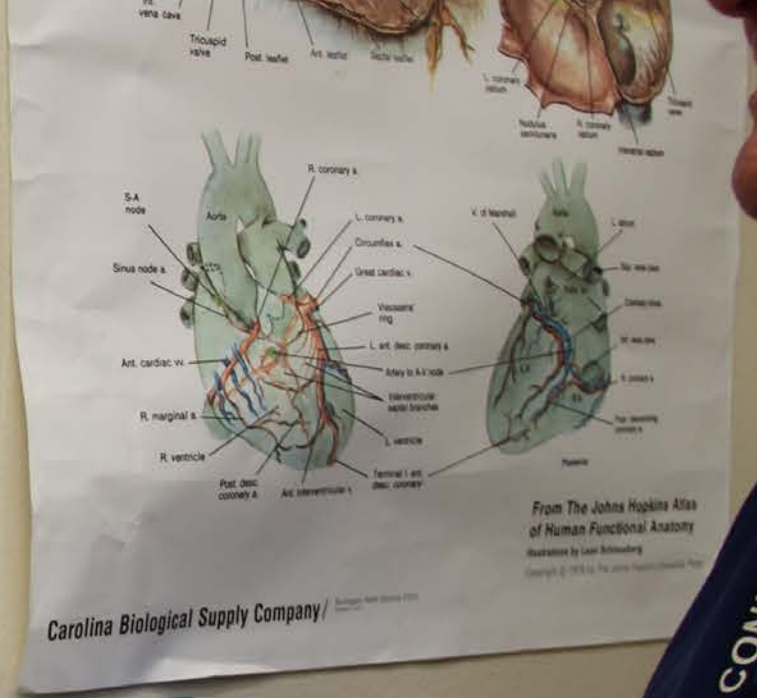
Carolina Biological Supply Co.

The bladeflask





In the slot



Art is happy!



Sharp Edge Right
Estremità affilata rivolta verso destra
Tang "UP"/Tang IN ALTO

CLICK

3

Counter included

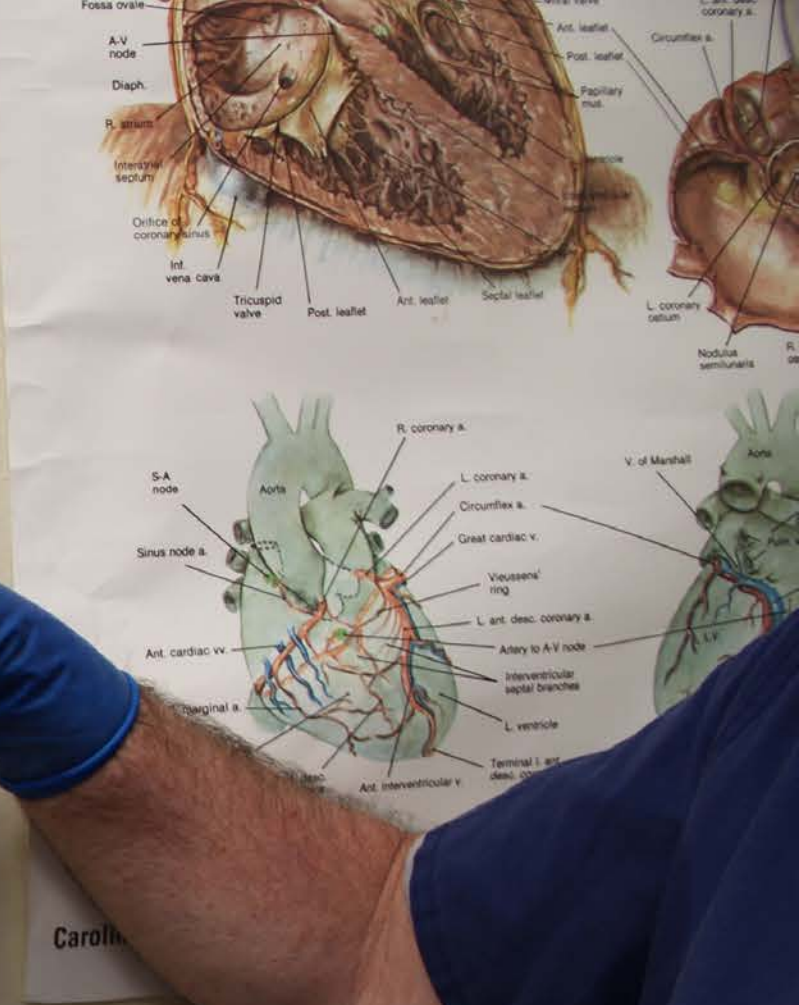
BFFL090723A5





<https://www.clicksmart.com/product/bladeflask/>

Easy disposal





Safe disposal



Bigger blade



Careful tool use