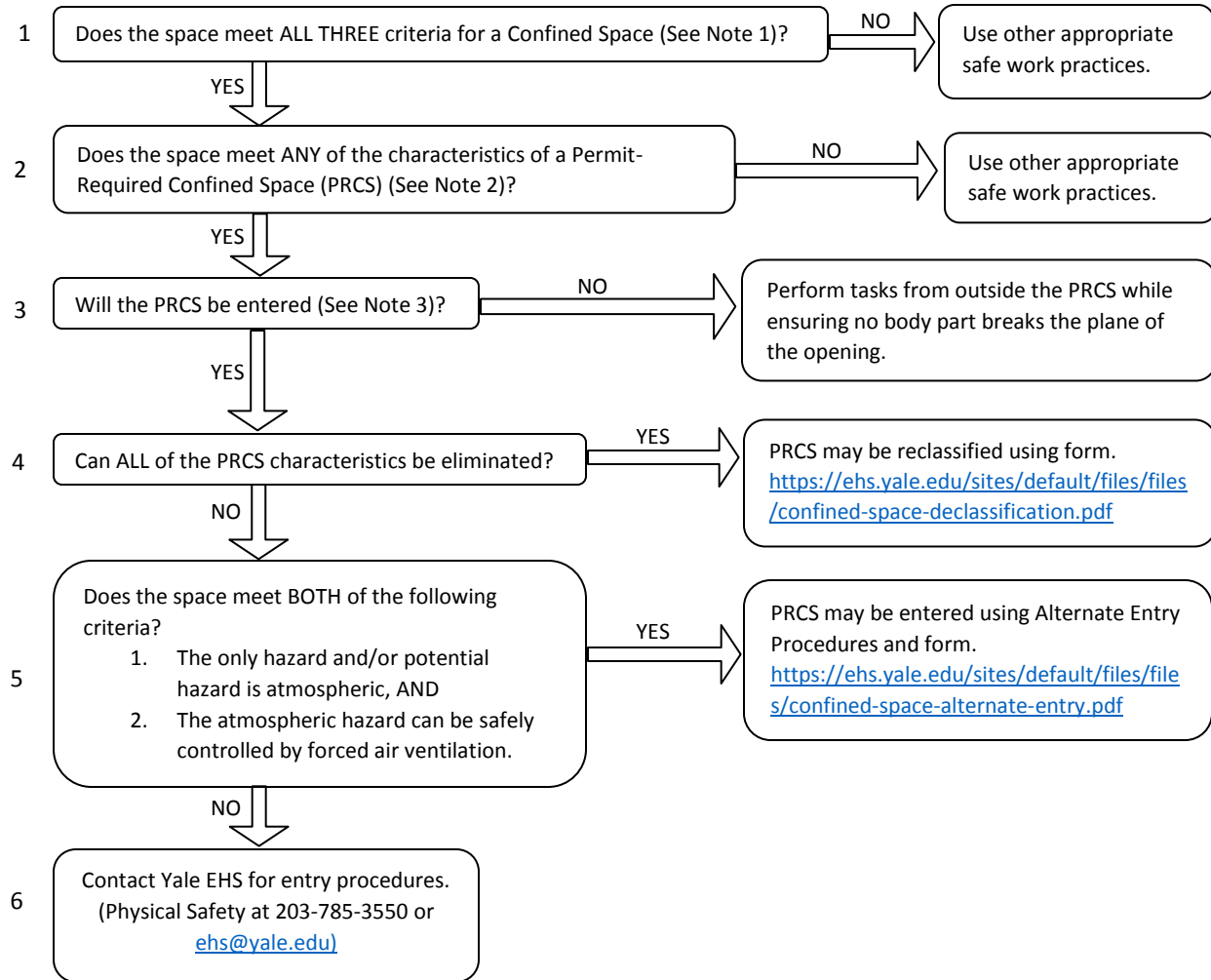


Confined Space Decision Flow Chart

This flow chart is a tool to help determine access requirements for confined spaces. Employees who enter these locations must also be trained on how to evaluate confined spaces and the proper procedures for safe entry and exit.

STEP



NOTES

- Confined Space** – A confined space has **all three** of the following characteristics:
 - Large enough for an employee to enter **fully** and perform assigned work;
 - Not designed for continuous occupancy; and
 - Has limited or restricted means of entry or exit.
- Permit-Required Confined Space** – A permit-required confined space is a confined space meeting the requirements above and has **at least one** of the following characteristics:
 - Contains or has the potential to contain a hazardous atmosphere;
 - Contains a material with the potential to engulf someone who enters the space;
 - Has an internal configuration that might cause an entrant to be trapped or asphyxiated by inwardly converging walls or by a floor that slopes downward and tapers to a smaller cross section; and/or
 - Contains any other recognized serious safety or health hazard.
- Permit-Required Confined Space Entry** – Entry occurs when **any part** of the body of an entrant breaks the plane of the opening of a Permit-Required Confined Space.